



Melanie Joubert
076 473 6188
melanie.joubert@harcourts.co.za

Contact Harcourts Dunn

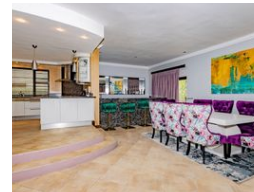
021 8212237

134 Edward Road
Belville
CapeTown
7550

NEW



Web Ref RL48028



R5,400,000

5 4 2

Monthly Bond Repayment R54,822.36

Calculated over 20 years at 10.75% with no deposit.

Transfer Costs R451,807.00 **Bond Costs** R65,785.00

These calculations are only a guide. Please ask your conveyancer for exact calculations.

Monthly Rates R2,000

Luxury Living: Double-Story Family Retreat with Table Mountain Views & Wine Farm Charm!

4-Bedroom Home + Separate 1 Bedroom Flatlet | Pool, Bar, Entertainer's Dream | Haasendal Elegance Meets Stellenbosch Tranquility

Step into refined living with this modern double-storey masterpiece, nestled in one of Haasendal's most desirable addresses. This beautifully designed home offers space, sophistication, and seamless indoor-outdoor living, all with breathtaking views of Table Mountain and the Peninsula.

From the moment you enter, you're greeted by light-filled open-plan living spaces featuring a luxurious lounge with gas fireplace, a chef's kitchen fitted with granite countertops, an eye-level oven, hob, and extractor fan, and a large scullery with separate laundry. An entertainer's dream, the home boasts both an indoor braai and custom-built bar area—with imported Indian finishes—flowing onto a covered patio with a...

Features

Pets Allowed Yes

Interior

Bedrooms	5
Bathrooms	4
Kitchens	1
Recep. Rooms	3
Furnished	No

Exterior

Garages	2
Carports / Parkings	6
Security	Yes
Pool	Yes
Views	True

Sizes

Floor Size	356m ²
Land Size	800m ²

