



Feroza Newman
061 518 7141
feroza.newman@harcourts.co.za



Reneé Goliath
076 150 4359

renee.goliath@harcourts.co.za

Contact Harcourts Dunn

021 8212237

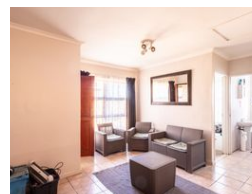
134 Edward Road
Belville
CapeTown
7550

SOLD



BANK ASSISTED, SOLE MANDATE

Web Ref WSL72644



R760,000

2 1

Monthly Bond Repayment R7,844.63

Calculated over 20 years at 11% with no deposit.

Transfer Costs R25,898.00 **Bond Costs** R19,565.00

These calculations are only a guide. Please ask your conveyancer for exact calculations.

Monthly Levy R1,041.3 **Monthly Rates** R176.9 **Sectional Title Levy** R1,065

Value for Money!!!

This spacious 2nd floor two-bedroom apartment is conveniently located in Forestdale Villas. It is close to all amenities, including shopping centres, restaurants, entertainment venues, public transport, and easy access to the main routes such as N1, N2, and R300, making it ideal for suburban living.

It offers an open-plan lounge area that flows seamlessly to a fully fitted kitchen with breakfast nook featuring ample counter space. It is a perfect space for preparing delicious meals and enjoying casual dining. There are also two carpeted bedrooms with built-in cupboards and one bathroom consisting of a bath, toilet, and basin.

Perfect for a first-time buyer, young couple, students, or a great investment property to add to your investment portfolio.

Don't miss the opportunity to make this lovely two-bedroom apartment your new...

Features

Interior

Bedrooms	2
Bathrooms	1
Kitchens	1
Recep. Rooms	1
Furnished	No

Exterior

Security	Yes
Pool	No
Views	False

Sizes

Floor Size	52m²
Land Size	9,160m²

Extras

Extractor Fan Security Gate Locality: Close To Schools Locality: Close To Shops Locality: Close To Transport Living Area: Open Plan Kitchen: Breakfast Bar Kitchen: Double Sink Kitchen: Under Counter Oven Kitchen: Finish Main Bedroom: Double Main Bedroom: Built-in-robe Bedroom 2: Double Bedroom 2: Built-in / Wardrobe Main Bathroom: Bath Laundry: In Kitchen Heating / Cooling: Electric Outdoor Living: Washing Line Window/door Frames: Timber Water Supply: Town Supply Sewerage: Mains