

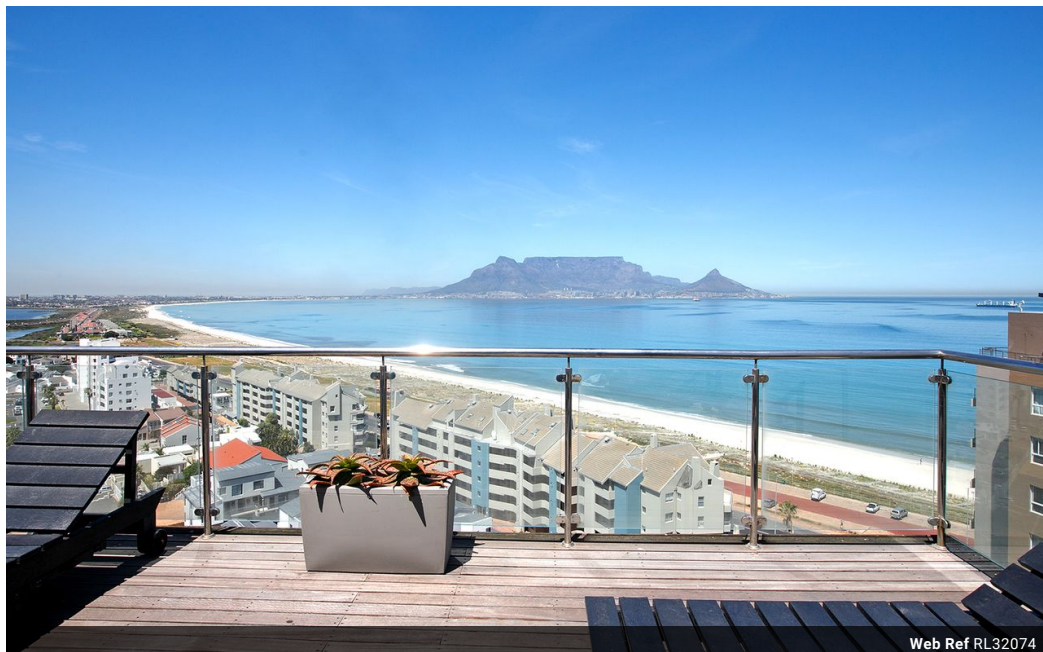


**Lauren Petersen**  
0736607298  
lauren.petersen@harcourts.co.za

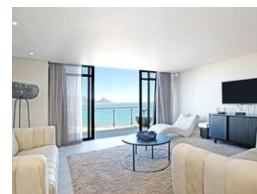
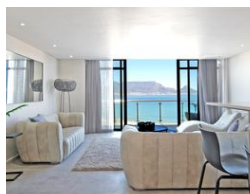
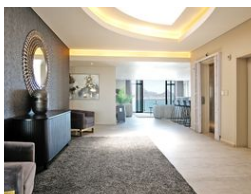
Contact Harcourts Dunn

021 8212237

134 Edward Road  
Belville  
CapeTown  
7550



Web Ref RL32074



R19,522,000



**Monthly Bond Repayment** R198,193.00

Calculated over 20 years at 10.75% with no deposit.

**Transfer Costs** R2,210,231.00 **Bond Costs** R132,285.00

These calculations are only a guide. Please ask your conveyancer for exact calculations.

**Monthly Levy** R15,966 **Monthly Rates** R9,127

### Invest in a Lavish Lifestyle

This exquisite penthouse offers a unique atmosphere, featuring stunning 360-degree views of Table View Mountain, the ocean, and Durbanville Hills, all accessible from the generous wrap-around balconies. The open-plan living areas are bathed in natural light, creating an expansive sense of space and freedom.

With four generously sized bedrooms, the main suite includes a sumptuous en-suite bathroom. The penthouse comprises four bathrooms in total, three of which are en-suite, all showcasing high-end finishes. The entertainer's open-plan kitchen is outfitted with premium appliances and a separate scullery, making it ideal for hosting gatherings and seamless living.

Additional features include 24-hour security, secure underground parking, and a private lift that opens directly into your entrance hall. Enjoy leisure time at the...

### Features

Interior		Exterior		Sizes	
Bedrooms	4	Carports / Parkings	2	Floor Size	454m <sup>2</sup>
Bathrooms	4	Security	No		
Kitchens	2	Pool	No		
Recep. Rooms	3	Views	True		
Furnished	Yes				

#### Extras

24 Hour Access Air Conditioner Balcony Bar Counter Bath, Toilet and Basin Built in Wardrobes Dishwasher Connection En Suite Entrance Hall Breakfast Nook Gas Hob Lifts Scullery Secure Parking Sliding Doors Centre Island Open Plan Kitchen Under Counter Oven Mountain View Sea Aluminium Window

