



Jeandre Mostert
083 794 6600
jeandre.mostert@harcourts.co.za



Samantha Fincham
083 571 7201

samantha.fincham@harcourts.co.za

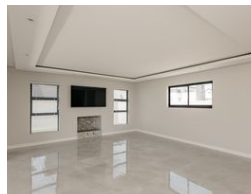
Contact Harcourts Dunn

021 8212237

134 Edward Road
Belville
CapeTown
7550



Web Ref RL37427



R5,300,000

4 3 2

Monthly Bond Repayment R52,914.13

Calculated over 20 years at 10.5% with no deposit.

Transfer Costs R440,978.00 **Bond Costs** R65,785.00

These calculations are only a guide. Please ask your conveyancer for exact calculations.

Monthly Levy R250 **Monthly Rates** R2,500

Newly Completed - 4 Bedroom Entertainer's Haven, within the Sandown Security Enclave!

This beautifully designed sanctuary, situated on a corner plot, spans a generous erf size of 488 square meters and offers an enormous house size of 329 sqm!

Perfect for family living, featuring four spacious bedrooms and three ultra-modern bathrooms, for comfort and convenience.

The heart of the home is the chef's kitchen, complete with a pantry / scullery. The expansive open-plan living areas boasts a gas fireplace, and provides a seamless flow for daily activities and entertaining guests. Enjoy evenings on the covered patio with a built-in braai, or relax under the stars, on the rooftop deck with built-in Jacuzzi.

Upstairs, the pajama lounge is a cozy retreat for family movie nights. The separate study offers a quiet space for work, while the double garage provides ample parking and storage. The low maintenance...

Features

Pets Allowed Yes

Interior

Bedrooms	4
Bathrooms	3
Kitchens	1
Recep. Rooms	3
Studies	1
Furnished	No

Exterior

Garages	2
Carports / Parkings	2
Security	No
Pool	No
Views	False

Sizes

Floor Size	329m ²
Land Size	488m ²

