



**Wendy Worthington**  
079 017 3022  
wendy.w@harcourts.co.za

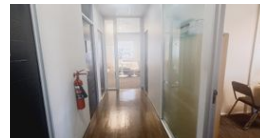
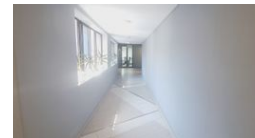
Contact Harcourts Dunn

021 8212237

134 Edward Road  
Belville  
CapeTown  
7550



Web Ref CL3615



R165 per m²

**Gross Monthly Rental** R112,000 Excl. VAT

0 0

## LARGE OFFICE TO LET IN TYGERVALLEY AREA

AVAILABLE FROM 1 MAY 2025!

Perfectly located near Tygervally Centre, Virgin Active, and other key commercial hubs. Within walking distance to public parking and just 5 minutes from the N1 highway. Tijger Park consists of five standalone buildings along Willie van Schoor Drive, fostering a collaborative atmosphere among the commercial areas.

### FEATURES:

- Backup generator
- 24-hour security
- Climate control throughout
- Kitchen facilities
- Spacious enclosed offices
- Conference and training rooms
- 5 Storage rooms
- Server rooms
- Shared restrooms

This listing comprises three combined office units totaling 678sqm on the first floor, accessible via lifts. This space is ideally

## Features

**Zoning** Commercial

### Sizes

Floor Size 678m²

