



**Wendy Worthington**  
079 017 3022  
wendy.w@harcourts.co.za

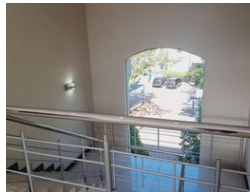
Contact Harcourts Dunn

021 8212237

134 Edward Road  
Belville  
CapeTown  
7550



Web Ref CL3746



R170 per m²

Gross Monthly Rental R67,150 Excl. VAT



0

0

## COMMERCIAL OFFICES TO LET IN BELVEDERE OFFICE PARK, ROSENPARK

**\*\*NOW AVAILABLE!\*\***

Discover this impressive low-rise office park, proudly featuring a remarkable 4-star Green Rating. With both open-air and basement parking options, you and your team will always have easy access to convenient parking spaces. The ground and upper floor offices showcase stunning views of the surrounding landscape, fostering a peaceful and productive work atmosphere. Enjoy peace of mind with 24-hour controlled access at all park entrances, ensuring the security of your business.

**\*\*Key Features:\*\***

- Energy-efficient design
- 24-hour security
- Easy highway access
- Nearby public transportation
- Fibre internet connectivity

**\*\*Office Amenities:\*\***

- Welcoming reception area
- Boardroom facilities
- Private office spaces

## Features

**Zoning** Commercial

**Sizes**

Floor Size 395m²

