



Riaan Grobbelaar
074 293 3576
riaan.g@harcourts.co.za



Wendy Worthington
079 017 3022

wendy.w@harcourts.co.za

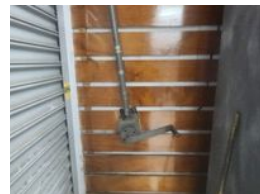
Contact Harcourts Dunn

021 8212237

134 Edward Road
Belville
CapeTown
7550



Web Ref CL3889



R106 per m²

Gross Monthly Rental R85,000 Excl. VAT

0 7

7 Pioneer Street, Oakdale, Bellville – Industrial/Warehouse/Retail Unit

This versatile steel-portal-frame industrial building under insulated corrugated sheeting occupies Erf 4414, with a 715 m² site, a 519 m² ceramic-tiled ground floor and a 280 m² timber-supported mezzanine level—perfect for storage or additional display space. Located in a popular business hub in Oakdale, surrounded by complementary industrial and retail operators

Property Highlights:

- Ideal for a showroom yet lay out and location also favours distribution
- Mezzanine level (280 m²) ideal for storage or extra shop/display area
- Container-high roller shutter door for seamless goods movement
- Three-phase power supply
- Alarm system with tenant-accounted armed-response/alarm-monitoring
- Seven dedicated parking bays on-site, plus extensive public parking opposite

Features

Zoning Commercial

Interior
Power 3 Phase Yes

Exterior
Security Yes
Open Parking Bays 7

Sizes
Floor Size 799m²

