



Devan Naidoo
082 412 0522
devan.naidoo@harcourts.co.za

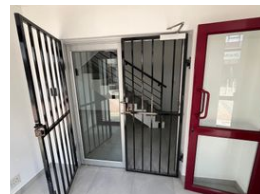
Contact Harcourts Dunn

021 8212237

134 Edward Road
Belville
CapeTown
7550



Web Ref CL4292



R110 per m²

Gross Monthly Rental R37,400 Excl. VAT

Monthly Levy R6,800 Excl. VAT

0 0

PRIME OFFICE SPACE IN TYGERVALLEY

Discover Your Ideal Office Space in Bo Oakdale, Bellville!!!

Welcome to a unique opportunity to elevate your business operations in a spacious 340m² commercial office located in the thriving area of Bo Oakdale, Bellville. This office space is not just a place to work, it's an environment designed to inspire productivity and foster collaboration.

Key Features:

- **Expansive Space:** With 340m² at your disposal, your business will have ample room to grow and adapt. Whether you're hosting meetings, organizing team collaborations, or setting up workstations, this versatile layout can accommodate your needs.

- **Air Conditioning:** Enjoy a comfortable working environment year-round. The efficient air conditioning system ensures that your team remains cool and focused, even on the hottest days.

Additional Features:

Features

Building Name	Bridge Centre		
Zoning	Commercial		
Interior			
Air Conditioning	Yes	Sizes	
		Floor Size	340m²

