



**Jean Van Der Merwe**  
0610542369  
jean.vdmerwe@harcourts.co.za

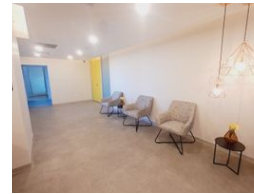
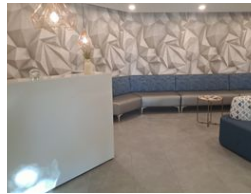
Contact Harcourts Dunn

021 8212237

134 Edward Road  
Belville  
CapeTown  
7550



Web Ref CL3665



R155 per m<sup>2</sup>

Gross Monthly Rental R226,765 Excl. VAT

0 0

## LARGE OPEN PLAN TO LET IN PARC DU CAP | BELLVILLE

**\*NOW AVAILABLE!\*\***

- 24-hour security-controlled entrance
- Spacious lobby upon entering Parc du Cap 2
- Nearby coffee shop
- Backup generator for uninterrupted service

This impressive space is ideally suited for a large call center or insurance company. If you're in search of a spacious office environment equipped with all the essential features, look no further! The layout resembles a horseshoe, featuring two entrances and large windows along the outer wall, providing beautiful views of the gardens and parking area.

Conveniently located in the center of the floor are the male and female restrooms.

This area offers flexibility to accommodate your needs, as it can be subdivided or combined:

- A: 310m<sup>2</sup>
- B: 371m<sup>2</sup>
- C: 361m<sup>2</sup>

## Features

**Zoning** Commercial

### Sizes

Floor Size 1,463m<sup>2</sup>

